

OPENING DOORS SINCE 1843

Loveitts est. 1843
THE ESTATE AGENTS



Alice Close
Bedworth, CV12 0BS

£195,000

3 2 1 G

Alice Close

Bedworth, CV12 0BS

A selection of newly built three bedroom detached and semi-detached properties forming part of a tranquil new development.

Plots 6 & 7 briefly comprise hall, ground floor cloakroom, lounge/dining room, kitchen area, three bedrooms (master with en-suite shower room) and family bathroom. There is parking to the front and a garden to the rear.

The market town of Bedworth is conveniently located between Coventry (6 miles) and Nuneaton (3.5 miles).





- Brand new semi-detached property
- Ground floor cloakroom
- Lounge/dining room
- Kitchen area
- Three bedrooms - master with en-suite shower room
- Family bathroom
- Parking & garden
- Convenient location close to the A444

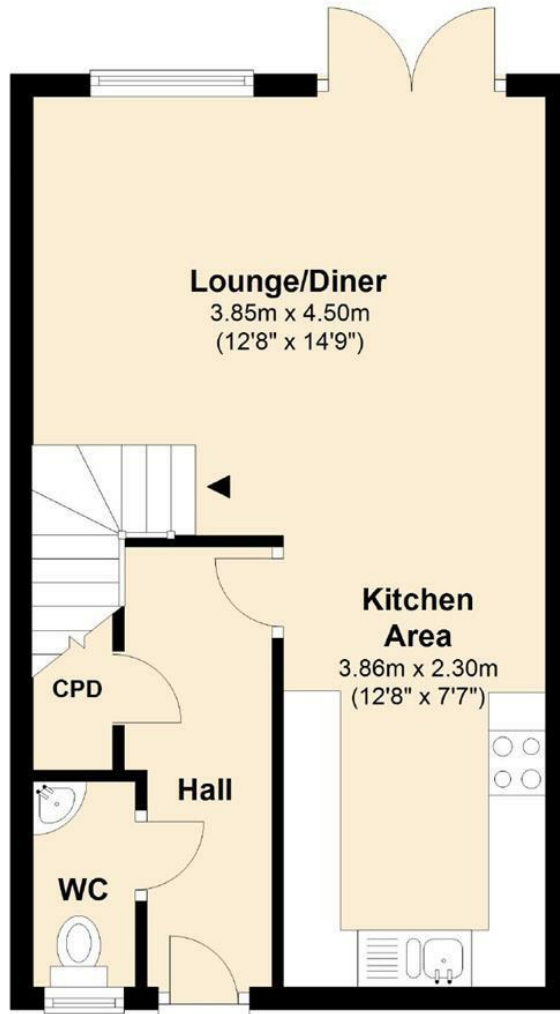


Floor Plan

Area Map

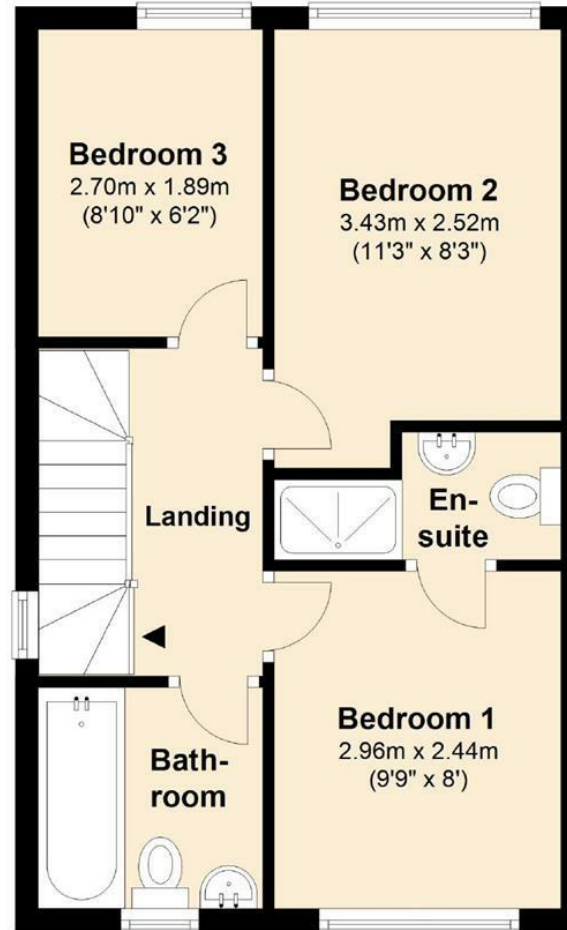
Ground Floor

Approx. 35.1 sq. metres (378.2 sq. feet)




First Floor

Approx. 34.9 sq. metres (375.9 sq. feet)



Total area: approx. 70.1 sq. metres (754.2 sq. feet)

Energy Efficiency Rating

	Current	Potential
Very energy efficient - lower running costs		
(92 plus) A		
(81-91) B		
(69-80) C		
(55-68) D		
(39-54) E		
(21-38) F		
(1-20) G	1	1
Not energy efficient - higher running costs		
England & Wales	EU Directive 2002/91/EC 	

These particulars, whilst believed to be accurate are set out as a general outline only for guidance and do not constitute any part of an offer or contract. Intending purchasers should not rely on them as statements of representation of fact, but must satisfy themselves by inspection or otherwise as to their accuracy. No person in this firm's employment has the authority to make or give any representation or warranty in respect of the property.